

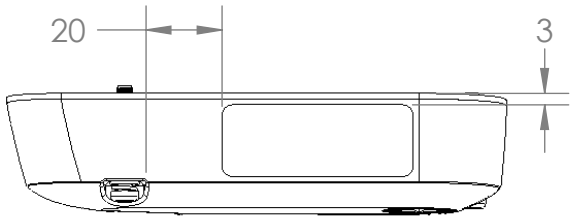
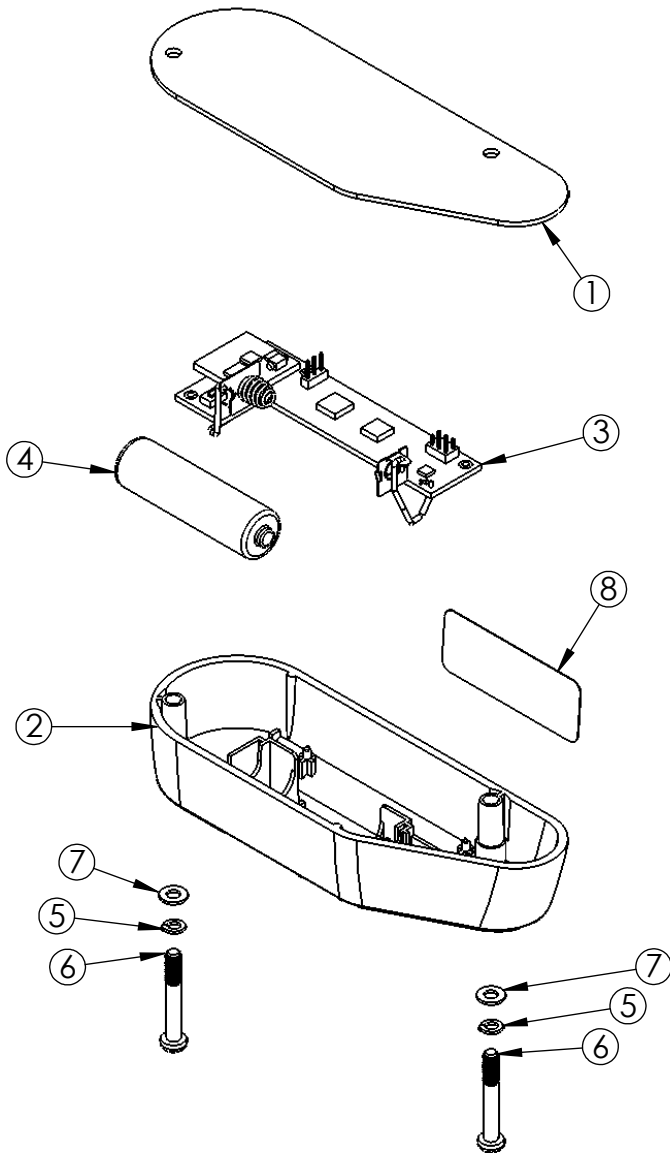
002-2327

MATERIAL. --

FINISH. --

REVISIONS

ECO	REVISION	REV DESCRIPTION	APPROVED	DATE
12489	A	DRAWING RELEASE	CRW	6/26/2009



ITEM	explode QTY.	PART NO.	DESCRIPTION
1	1	002-2329	POWER SENSOR GASKET
2	1	002-2328	POWER SENSOR FRONT CASE
3	1	002-2321	POWER SENSOR ELECTRONICS
4	1	002-2326	AA SIZE BATTERY
5	2	003-5622	M4 SS LOCK WASHER
6	2	003-5661	M4-1.0 x 28 SS PHP SCREW
7	2	003-5663	M4 SS WASHER
8	1	899-0027	POWER SENSOR LABEL

ENGINEERING J.BENDER
APPROVAL 06/25/2009
DRAFTING C.WISHON
APPROVAL 06/25/2009
INDUSTRIAL DESIGN J.GETTLE
APPROVAL 06/25/2009



NAUTILUS, INC.
16400 SE NAUTILUS DRIVE, VANCOUVER, WA 98683

CONTACT.

UNLESS OTHERWISE SPECIFIED:

1. ALL DIMENSIONS APPLY BEFORE PLATING OR COATING.
2. REMOVE ALL BURRS, BREAK SHARP EDGES 0.5 MM MAX.
3. ALL MACHINED SURFACES Ra 3.2 µm.
4. ALL APPLICABLE NAUTILUS STANDARDS AND SPECIFICATIONS APPLY.

THIRD ANGLE PROJECTION



TOLERANCES.	X.	± 3
	X.X	± 0.5
	X.XX	± 0.25
	X.XXX	± 0.1
	ANGULAR	± 1°

(INTERPRET DIMENSIONS AND TOLERANCES PER ASME Y14.5M - 1994)

DESIGNED	K.ANDREWS
DRAWN	C.WISHON
DATE	12/10/2008

DO NOT SCALE DRAWING

TITLE.

POWER SENSOR

SIZE

A

PART NO.

002-2327

REV.

A

SCALE: 1:2

SHEET 1 OF 1

METRIC_A_REV E